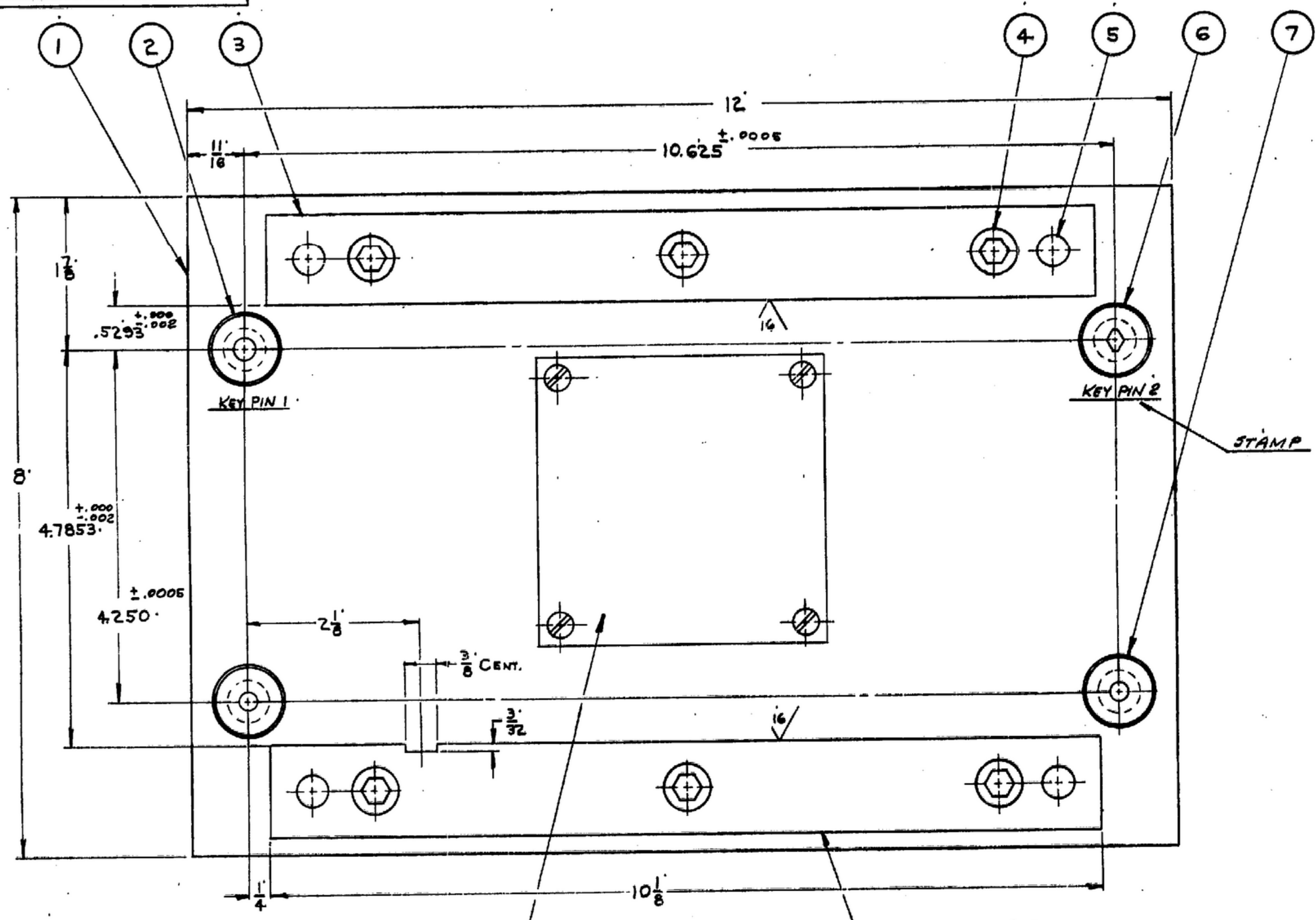
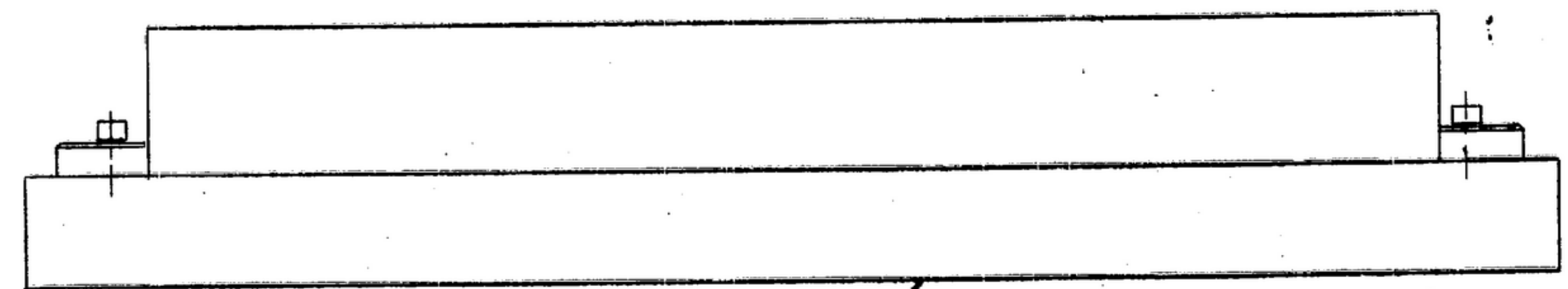


NOTE: *FOR INFORMATION ONLY, CONTRACTOR MAY AT HIS OPTION DEVIATE FROM THESE PROCESS DETAILS

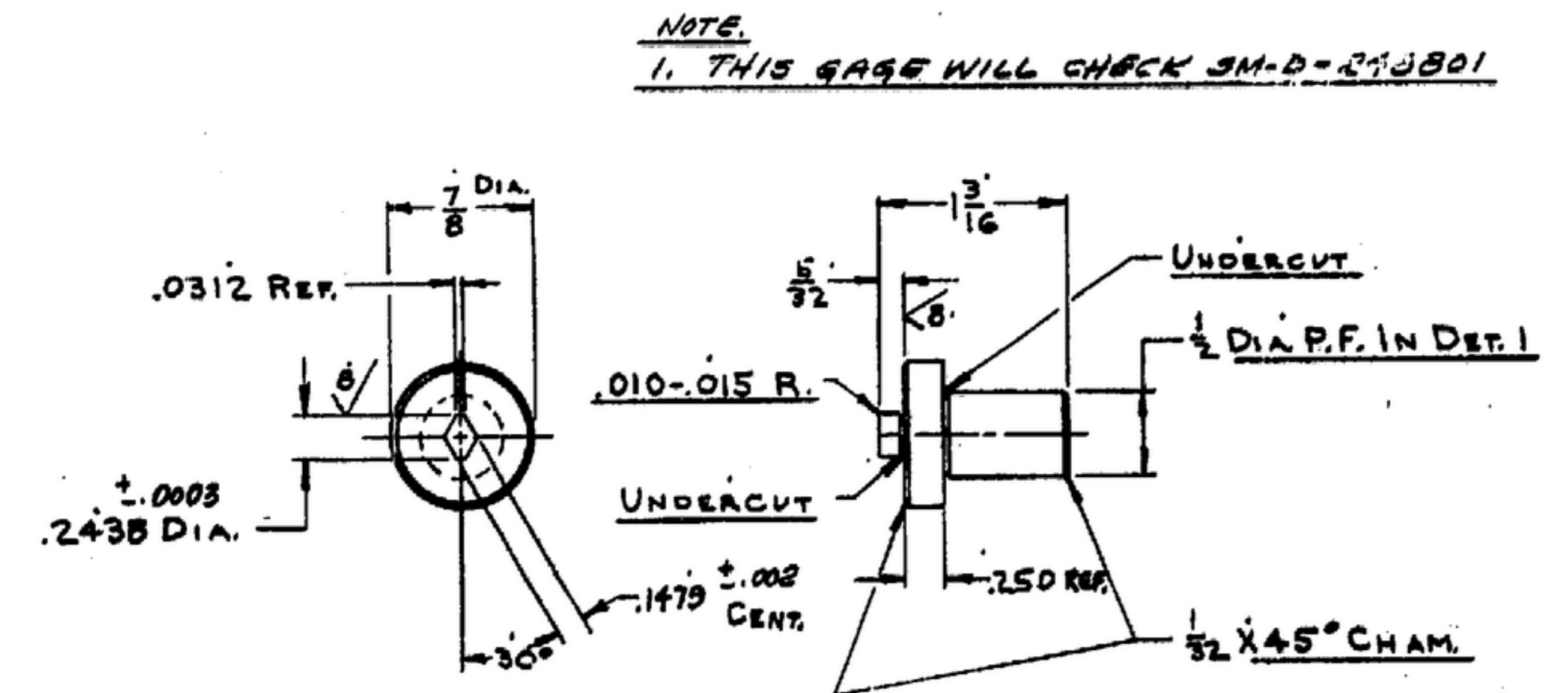
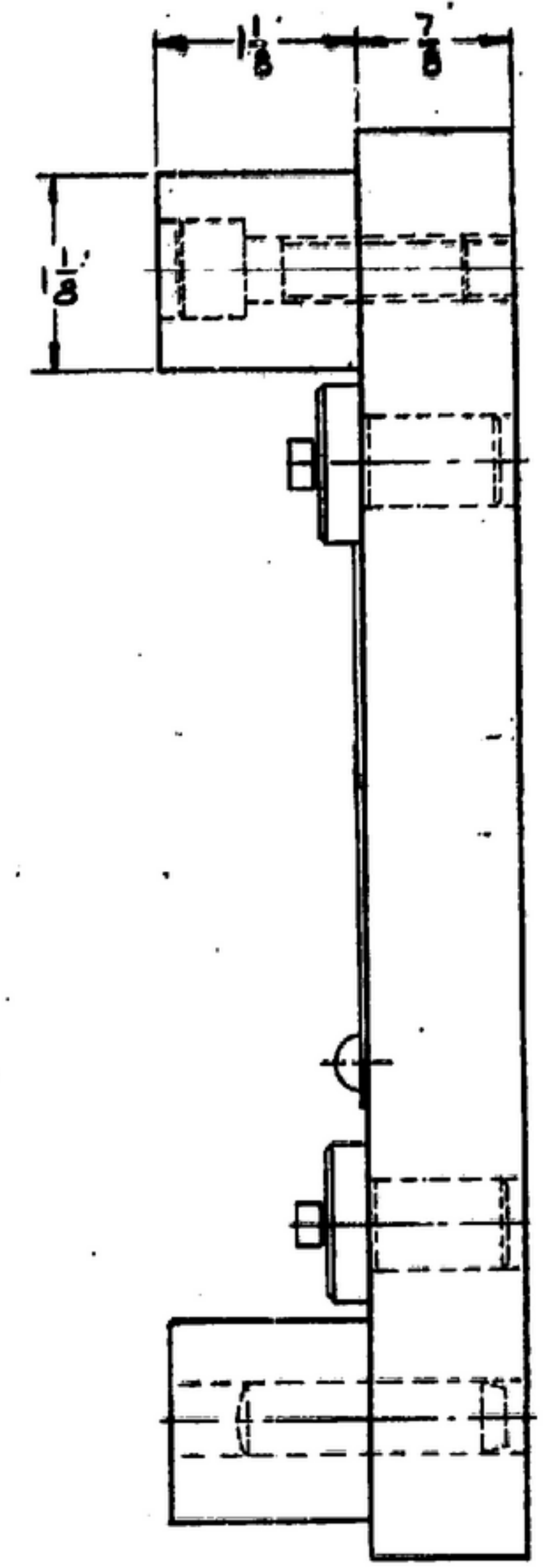


ENGRAVE:
 R-390A/URR.
 RECEIVER
 AUDIO SUB CHASSIS
 CHECK MAX. OVERALL DIM. &
 LOC. OF 4 MTG. HOLES.
 SIG. C. INSP.
 57320
 (MFR'S NAME OR SYMBOL)

STEEL-NORM. & TEMPERED
 PER SPEC. QQ-S-633
 ROCK. C° 60-63

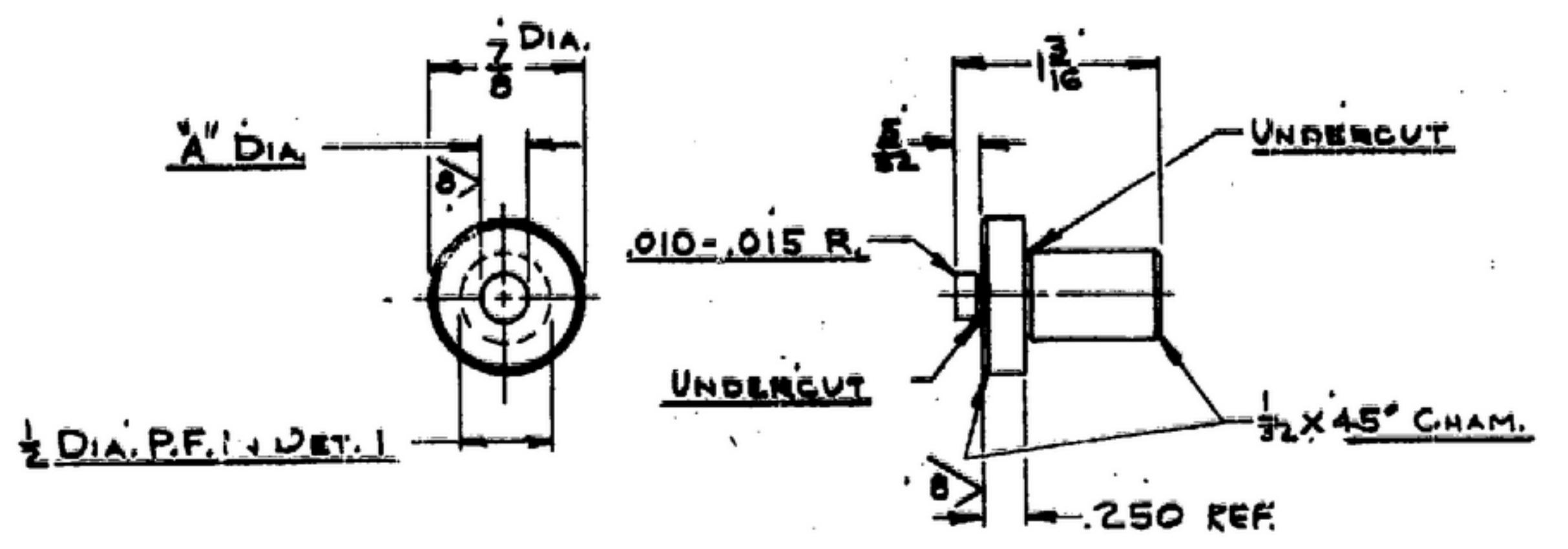


STEEL-NORMALIZED
 PER SPEC. QQ-S-633



NOTE:
 1. THIS GAGE WILL CHECK SM-D-57320

PIN
 6 1 REQ. - STEEL-FS-A2 PER SPEC.
 QQ-S-00778 - ROCK. C° 62 MIN.



PIN
 2 1 REQ. - X°.248 ±.003 - STEEL-FS-A2
 PER SPEC. QQ-S-00778 - ROCK. C° 62 MIN.

PIN
 7 2 REQ. - X°.2187 ±.003 - STEEL-FS-A2
 PER SPEC. QQ-S-00778 - ROCK. C° 62 MIN.

NOTE:
 1 ALL DIAS ON DET'S 2, 6 & 7 TO BE CONCENTRIC WITHIN .0002 T.I.R.
 2 A PROTECTIVE FINISH PER SPEC. MIL-G-10944 (ORD) SHALL BE APPLIED TO NON-FUNCTIONING, NON-GAGING & NON-LOCATING SURFACES TO PREVENT CORROSION. BLACK OR GRAY COLORS ARE PREFERRED.

ITEM	PART NO.	DESCRIPTION	MATL.	MATL. SPEC.	NOTES
7	2	PIN 7/8 DIA. X 1 1/8			
6	1	PIN 7/8 DIA. X 1 1/8			
5	4	3/8 DIA. X 1 1/2 BOWEL			
4	6	3/8-16 X 1 1/4 SUG. HD. SCB	STEEL		
3	2	RAIL 1/8 SEC. X 10/16			
2	1	PIN 7/8 DIA. X 1 1/8			
1		SM-D-57320-1 PLATE 7/8 X 8 X 1/2			

UNLESS OTHERWISE SPECIFIED DIMENSIONS ARE IN INCHES TOLERANCES ON FRACTIONS DECIMALS ANGLES ± 1/32		ORDER # 06719-PH-55-93 SIGNAL CORPS REVIEWED PNE APPROVED PNE DATE 13-10-55 SCALE FULL	GAGE TO CHECK MAXIMUM OVERALL DIMEN- SION OF AUDIO SUB CHASSIS, & LOC. OF 4 MTG. HOLES. SM-D-57320	DEPARTMENT OF THE ARMY SIGNAL CORPS ENGINEERING LABORATORIES Ft. MONMOUTH NEW JERSEY SM-D-57320
-------------------------------------------------------------------------------------------------------------	--	----------------------------------------------------------------------------------------------------------	----------------------------------------------------------------------------------------------------------------	-------------------------------------------------------------------------------------------------------------

WHEN REFERRING TO THIS DRAWING STATE DRAWING NO., APPLICABLE ISSUE SYMBOL, IF ANY, AND DATE.